



The Standards Based Integration Company

Systems Integration Specialists Company, Inc.

IEC 62325-450 Market Profile Rules

CIM University
Austin, Texas
November 15, 2011



Margaret Goodrich, Manager, Systems Engineering
SISCO, Inc.
6605 19½ Mile Road
Sterling Heights, MI 48314 USA
Tel: +1-903-477-7176
Fax: +1-903-489-0063
E-Mail: margaret@sisconet.com



Topics

- Scope/Purpose
- Profile Generation Methods
- Modeling Framework
- Modeling Framework Example
- Questions

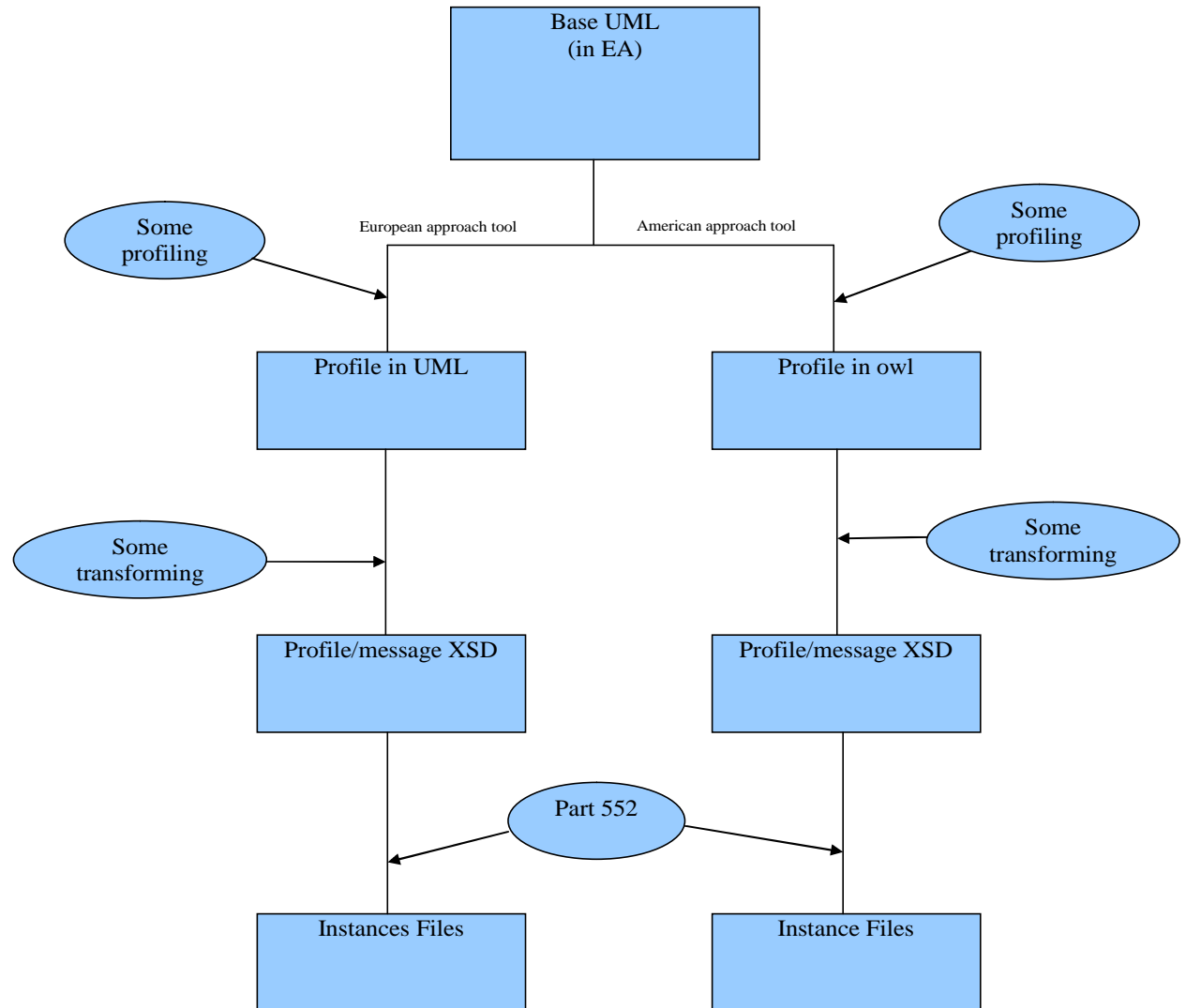


Scope/Purpose

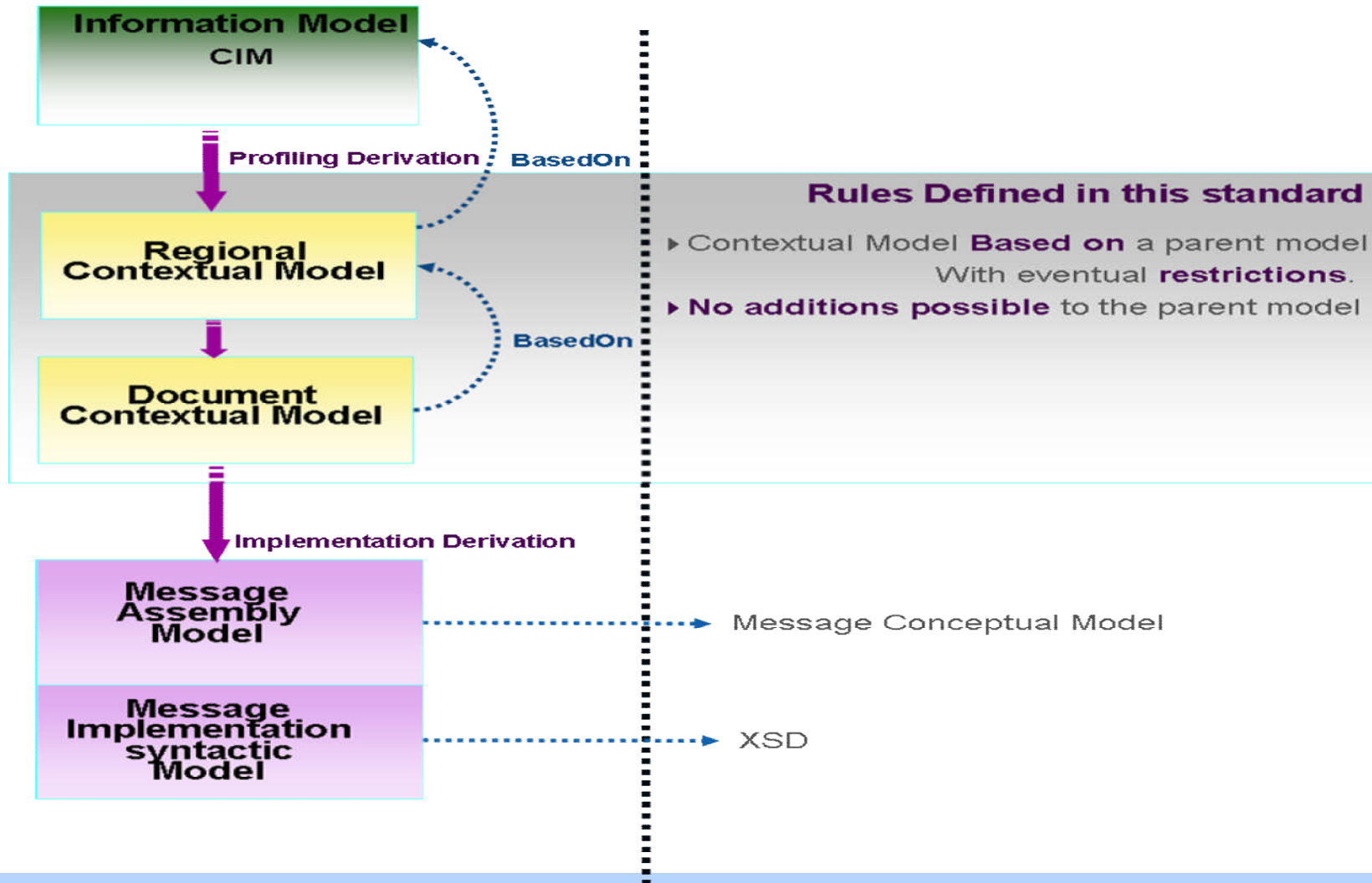
- Facilitate the integration of market application software developed by different vendors using message exchanges.
- The profile specifications defined in this standard specify the content of the messages exchanged.
- This document also provides the profile and context modeling rules for these message profile specifications that support the design of all electricity markets.
- This document is primarily concerned with the profile and contextual modeling rules for the European-Style Markets; however, there is nothing that would prohibit the use of these rules for the NA-Style Markets.

Profile Generation Methods

- The rules defined within this document do not preclude the use of either path shown here and any conflicts are unintentional.
- In the event a rule exists that precludes the use of either path, that rule should be considered invalid and will be removed from future revisions.



Modeling Framework



Modeling Framework – CIM and Regional Contextual Models

- The Common Information Model (CIM):
 - provides the overall semantic model
 - is the basis on which all information interchange requirements are built independently of the Regional Contextual Model being used.
- The Regional Contextual Models:
 - are built to cover the market information interchange requirements for a given Region (i.e. the Business Context). A Region may be a continent, a specific country or an organization.
 - are based on the CIM artefacts
 - specific regional artefacts themselves cannot contradict the CIM artefacts on which they are built.

Modeling Framework – Document Contextual Models

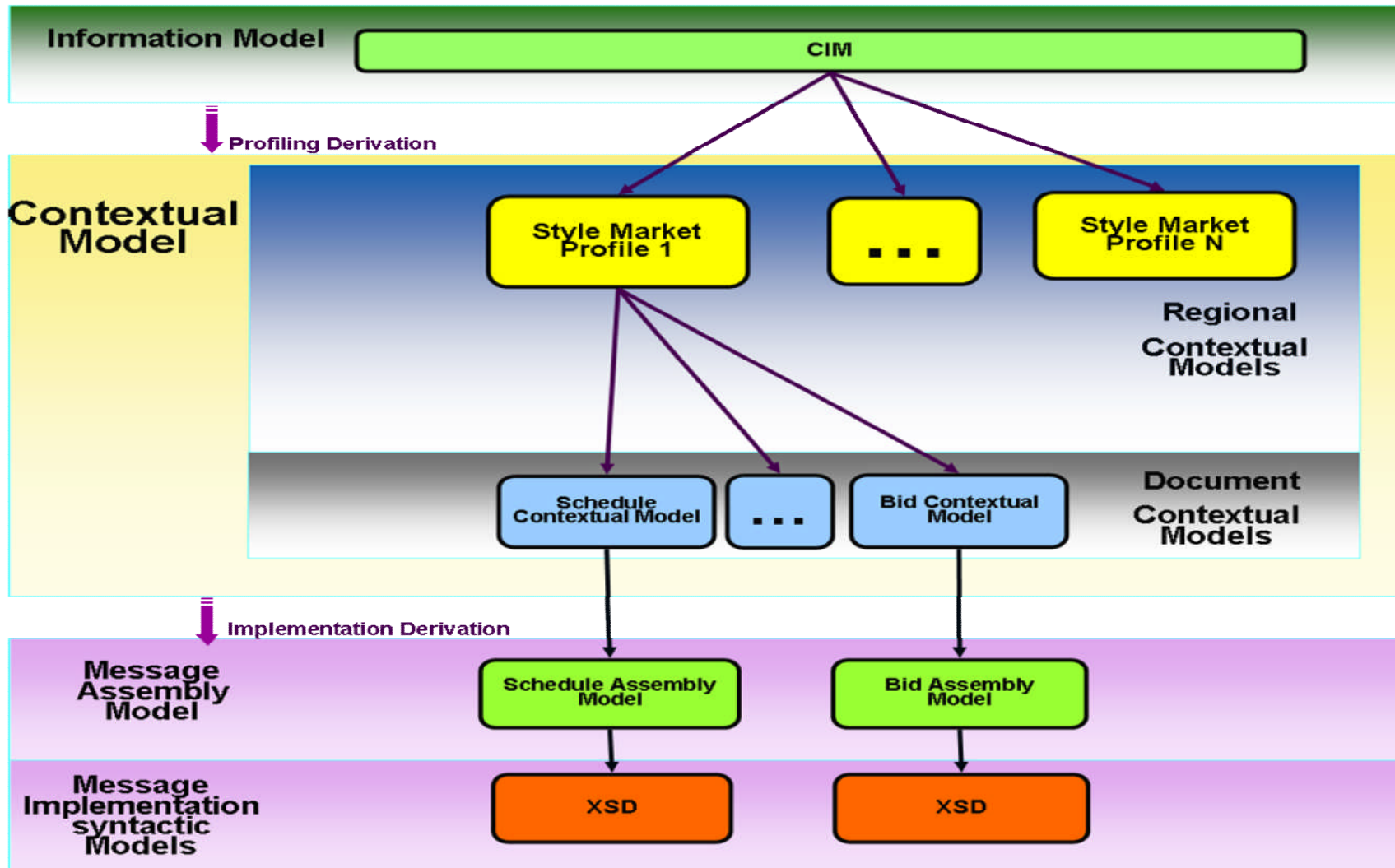
- Specific contextualised Documents:
 - are derived to apply specific information interchange functional requirements.
 - cannot contradict the Regional Contextual Model on which they are built.
 - may introduce additional constraints to apply specific informational requirements to the context in which the documents are used

Modeling Framework – Message Assembly

- The final step applies standardized message assembly rules to provide an optimised information structure for information interchange.
- All syntax specific electronic documents are built from the Message Assembly Models. This last level is not covered by this standard.

The objective of this document is to provide the rules that ensure that each level of Contextual Model refinement maintains coherence with the level on which it is based.

Modeling Framework Example





Questions

- For additional information, send an email to margaret@sisconet.com
- Or call:
 - Home Office: (903) 489-1494
 - Cell: (903) 477-7176