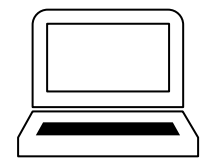
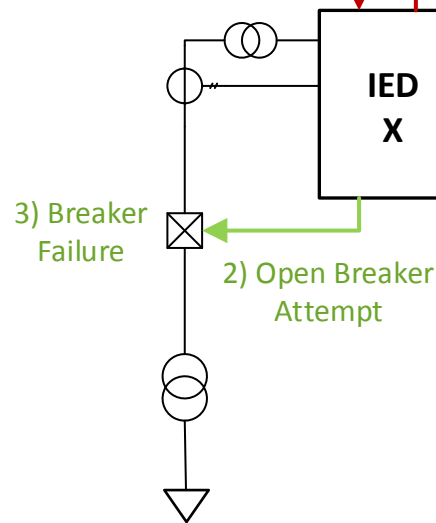


External Instantaneous Overcurrent Protection (PIOC) for Each IED

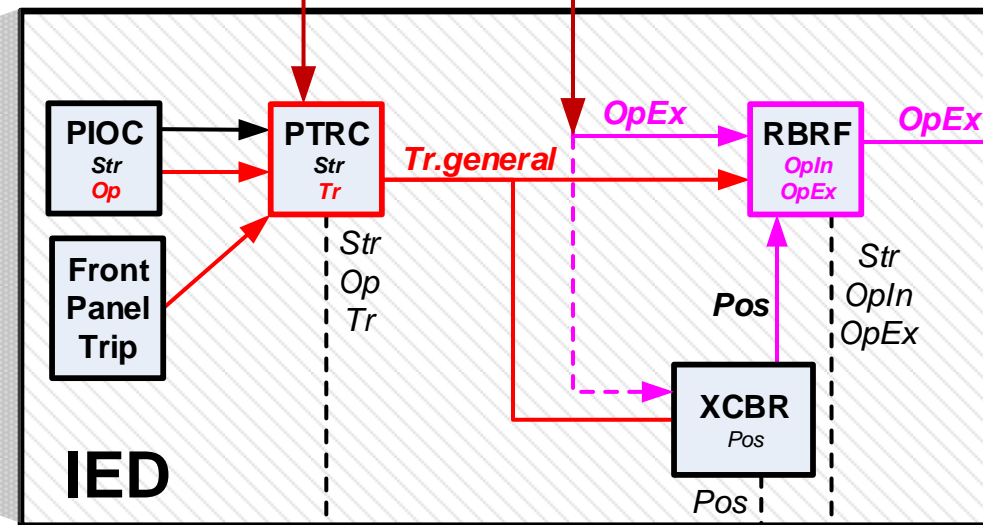


1) Initiate Trip with PIOC.Op GOOSE or IED Front Panel

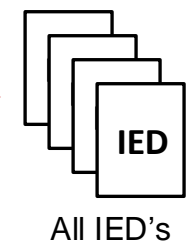


4) Broadcast GOOSE Breaker Failure (RBRF.OpEx = True)

Initiate Trip External PIOC.Op = True
Breaker Failure <GOOSE> from another IED RBRF.OpEx = True



<GOOSE> Broadcast RBRF.OpEx



<Reports>

