

# TOSHIBA

Leading Innovation >>>

**TOSHIBA IED**

## GR-200 Series

General leaflet

### Extensive product range

Key IEDs from the GR-200 universal platform designed to meet expansive and future demands:

- ➔ GBU200 Bay Control
- ➔ GRZ200 Distance Protection
- ➔ GRL200 Line Differential Protection
- ➔ GRT200 Transformer Protection
- ➔ GRB200 Busbar Protection
- ➔ GRG200 Generator & Motor Protection
- ➔ GRX200 Railway DC protection
- ➔ GRY200 Railway AC protection
- ➔ GRD200 Multi-Function Protection & Control

### Communication

For communications within a substation automation system or to a remote control centre a wide range of system interface support is provided within the GR-200 Series IEDs including, IEC 61850-8-1, DNP3.0, Modbus® RTU protocol and IEC 60870-5-103.

Line differential and teleprotection communications interfaces include direct optical fibre, X.21, RS530, CCITT G703 and IEEE Std. C37.94.

### Configuration Tool

Powerful GR-200 series IED configuration tool [TOSHIBA IED Engineering & Monitoring Software] provides you with user-friendly support not only to configure the IED but also to monitor and analyze your power network via the IED with the following functions:

- Project management
- Monitoring
- Records [fault, disturbance and event]
- Settings
- Programmable logic controller [compliant with IEC 61131-3]
- Communication configuration
- Testing
- Advanced monitoring [Option]
- Advanced fault recording [Option]
- Auto-setting configuration [Option]

**TOSHIBA**  
**TOSHIBA CORPORATION**

Social Infrastructure Systems Company

72-34, Horikawa-cho, Saiwai-ku Kawasaki-shi, Kanagawa 212-8585, Japan  
Tel +81-44-331-1462 Fax +81-44-548-9540  
<http://www.toshiba-relays.com>

- The information provided in this catalog is subject to change without notice.
- The information provided in this catalog is accurate as of 31 July 2014.
- The information provided in this catalog is presented only as a guide for the application of TOSHIBA products. No responsibility is assumed by TOSHIBA for any infringements of patents or other rights of third parties which may result from its use. No license is granted by implication or otherwise under any patent or patent rights of TOSHIBA or others.
- TOSHIBA products should not be embedded within downstream products production and sale of which are prohibited, under any law and regulation.
- Toshiba does not take any responsibility for incidental damage (including loss of business profit, business interruption, loss of business information and other pecuniary damage) arising out of the use or misuse of TOSHIBA products.

©Copyright 2014 Toshiba. All rights reserved.



# GR-200 Series

The Next Generation has arrived.....  
...founded upon a history of  
more than 100 years

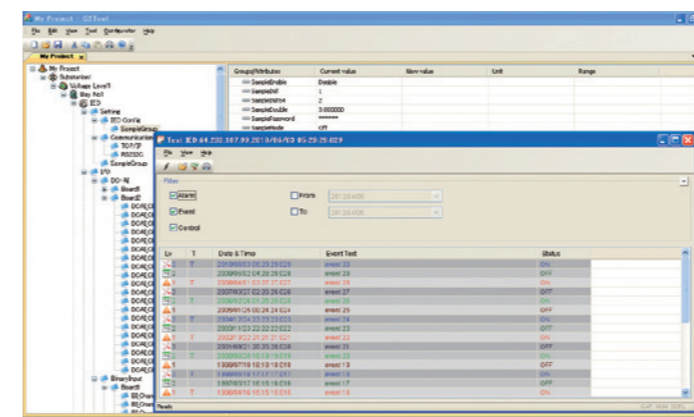


GRZ200

GRL200

GBU200

- Protection & Control for Transmission & Distribution Networks
- Universal Platform for Future Grid Applications
- Extensive Hardware Options for Flexible Adaptation
- Customised Application using Independent Function Blocks
- Extensive Range of Products for all Network Arrangements
- Configurable to user Functional Requirements



Engineering & monitoring software

## GR-200 series concept:

### Fit to customer needs -

Extensive hardware and modular software combinations provide the flexibility to meet your application and engineering requirements. Future upgrade paths and minor modifications are readily achievable on demand.

### Powerful and wide application -

In addition to protection & control, GR-200 has been designed to meet the challenges and take advantage of developments in information & communications technology.